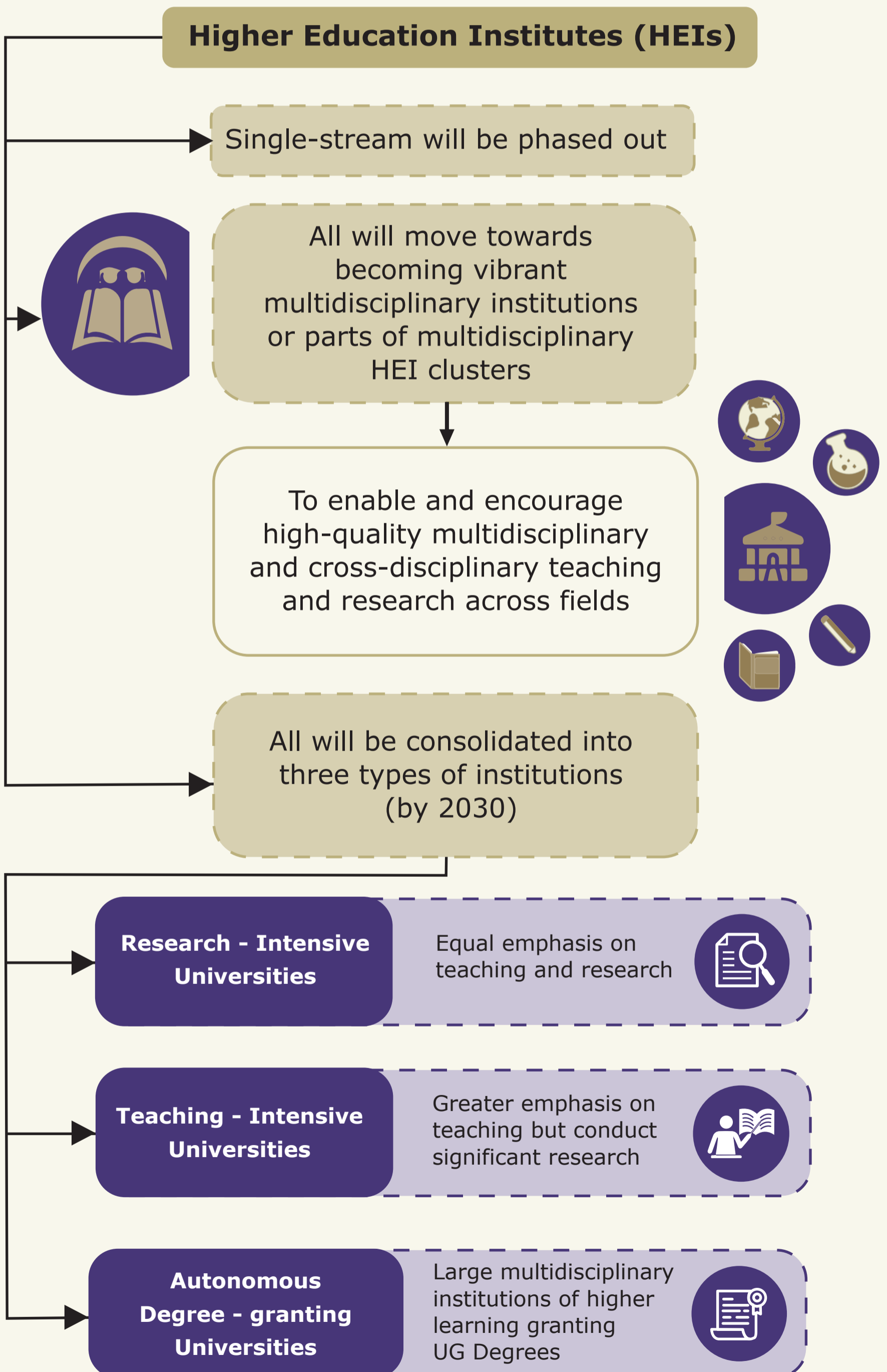


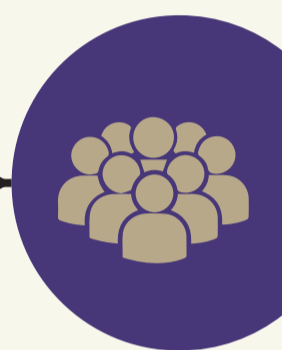
# Multidisciplinary Higher Education Institutes



# Multidisciplinary Higher Education Institutes



## Recommendations of NEP- 2020 on HEIs



By 2040 all HEIs will become Multidisciplinary and with bigger (>3000) student strength.

(NEP-2020 Section 10.7)



By 2030, at least one large Model public multidisciplinary HEI called Multidisciplinary Education and Research University (MERU) in or near every district will be set up.

(NEP-2020 Section 10.8)



Highest standards for Higher Education through MERU

(NEP-2020 Section 11.11)

At par with IITs, IIMs

Attain the highest global standards in quality higher education

Set the highest standards for multidisciplinary education across India